



## Minutes of Mortimer Liaison Committee Meeting, Tuesday 6<sup>th</sup> February 2024

<b>Attendees:</b>	Olly Thompson - Hills Quarry Products David Smith - Hampshire County Council Tony Wright - Pinelands Park Resident	Richard Edwards - Englefield Estate Dave Phenna - Pinelands Park Resident Kevin Cross - Mortimer West End Parish Council
<b>Apologies:</b>	Edward Crookes - Englefield Estate Karen Scott – Pinelands Park Resident	Frank Rodriguez – Hills Quarry Products

### 1.0 Introductions

### 2.0 Previous Meeting Minutes

### 3.0 Operational Review:

#### Operation:

Hills Quarry Products (HQP) are currently extracting phase 2, having exhausted phase 1 reserves. Currently around 90% of the way through phase 2, with the intention of moving into phase 3 towards the end of the year. HQP have placed soils back on part of phase 2 ready for Englefield Estate (EE) to plant trees as part of the restoration process. Silt lagoons construction is now complete in phase 1. These silt lagoons take the wastewater from the plant, the silt then settles out and clean water is pumped back to the plant, effectively recycling as much water as possible. **OT**

Production is going well and is increasing. The majority of HQP sales go directly into Day's bagging operation on site.. We are hoping that with the increased production, this will increase sales. As per the previous meeting, a section of phase 3 has just been felled in preparation for the quarry works to progress into this area. No further work has taken place here. We are now looking into a footpath crossing rather than the originally proposed tunnel. Olly & Dave are awaiting a meeting with Highways to discuss this. Fencing has been erected around the boundary of phase 3. This is a mixture of permanent reptile fencing, temporary reptile fencing and perimeter H&S fencing to prevent public access. Future plans to install more reptile fencing around the entire perimeter of phase 3 and phase 4 throughout March this year alongside ecological surveys in phase 4. **OT**

EE has planted 6,500 trees in the restored area of phase 2, with 2x minor areas left to plant towards the end of 2024. Currently installing deer fencing to protect the saplings. The gates will be removed, and signs installed to help provide information to pedestrians on the ongoing works. **RE & OT**

### 4.0 Community Engagement

As per the previous meeting whereby, community members brought up their concerns surrounding noise from the operations, HQP have completed environmental noise monitoring surveys at certain receptor points around the site. One of these includes directly outside one of the residents on Welshman's Road. The outcome of which is; the levels of noise due to the excavation works do not exceed the maximum permissible working levels set out in the planning consent. **OT**

Hills Quarry Products have adopted a conveyor belt system to minimise the impact of noise and dust. The conveyor belts remove the need for dump trucks to haul material back and forth. They are much quieter, have minimal dust emissions compares to using dump trucks and also have significant savings in fuel burn and subsequent CO2 emissions. The machinery that will be in operation in the dig will be a 360 excavator, a loading shovel and a screener to feed material onto the conveyor belts. To reduce the impact of noise from these items of machinery, screening bunds will be erected around the perimeter of the entire site. These are already in place in the current workings and can be used as an example of how they reduce both visual and noise impacts. There is also a non-negotiable 90m standoff from Pinelands Park. **OT**

The biggest issue seems to be the noise created by lorry movements along Welshmans Road. In particular, the Western end of Welshmans Road, outside of Pinelands Park to the south, and the homes to the north side of the road. The noise is generated by lorries either going too fast down the road, creating wind/engine/tyre noise as well as the noise of the bodies of the wagons clattering together, steel-on-steel, as they hit potholes etc. **OT**

This problem is difficult for HQP to tackle as it is occurring on a public highway and therefore, HQP have no control here. However, HQP's transport manager has raised awareness with our drivers and this subject is covered in the driver's handbooks. **OT**

As per the previous meeting, David Smith has spoken with highways to see if he can escalate the pothole issues and also move the national speed limit sign to beyond the houses therefore, reducing the speed of the HGVs in front of these residences. Unfortunately, potholes are being dealt with in such a way that they prioritise those which cause safety concerns/incidents. There is a pothole reporting portal on the local highway's website which can be used to raise concerns about specific areas. The more reports that are made, the more likely it is to be dealt with. **DS**

<https://www.hants.gov.uk/transport/roadmaintenance/roadproblems/potholes>

Regarding the moving of the speed limit sign, unfortunately this would be determined by police intervention. Signs can only be implemented/moved by highways if there is police involvement. The police would need to have reasonable concern for highway safety/accidents to recommend to highways that a sign be moved/changed. **DS**

In response to this, Tony Wright will speak with the local community support officer and will also raise this with the local parish council (Christine McGarvie – Mortimer West End Parish Council clerk). Kevin Cross will also raise at the MWE parish council meeting and can assist Tony Wright where necessary. **TW**

Tony Wright also raised concerns about a bollard being placed in the middle of the pothole, causing cars to have to swerve into the other side of the road to avoid it. This has since been removed however, would definitely be cause for safety concerns/risk of accidents therefore, might be a reason for police involvement to either sort the potholes out or change the speed limits. **TW**

Residents asked about the scale of the operation and each individual phase and if these are likely to change. Olly Thompson explain that the plans shown are the approved planning documents and will therefore, not change. **TW & OT**

Dave Smith mentioned that plans are going ahead to reinstate the footpath through Burnt Common. This area is on a long-term management plan and has excellent ecology, offering a wide variety of habitats throughout. **DS**

## **5.0 Any Other Business:**

Potential site tour on next meeting.

Kevin Cross enquired about site open day and if HQP ever do anything like this. Olly Thompson say we have done so in the past and it is feasible but depends on interest.

Plans/Drawings to be attached to bottom of these minutes. Also, any contact details and relevant links.



## 6.0 Contacts & Links:

David Smith, Hampshire County Council:  
Email: [david.smith@hants.gov.uk](mailto:david.smith@hants.gov.uk)  
Tel: 07810 162684

Richard Edwards, Englefield Estate:  
Email: [richard.edwards@englefield.co.uk](mailto:richard.edwards@englefield.co.uk)  
Tel: 07774 164 205

Olly Thompson, Production Manager, Hills Quarry Products:  
Email: [olly.thompson@hills-group.co.uk](mailto:olly.thompson@hills-group.co.uk)  
Tel: 07786733830

## 5.0 Plans/Drawings:

See appendix at end of document. (also attached to email)

## 6.0 Useful Links:

<https://www.mortimerquarry.co.uk/>

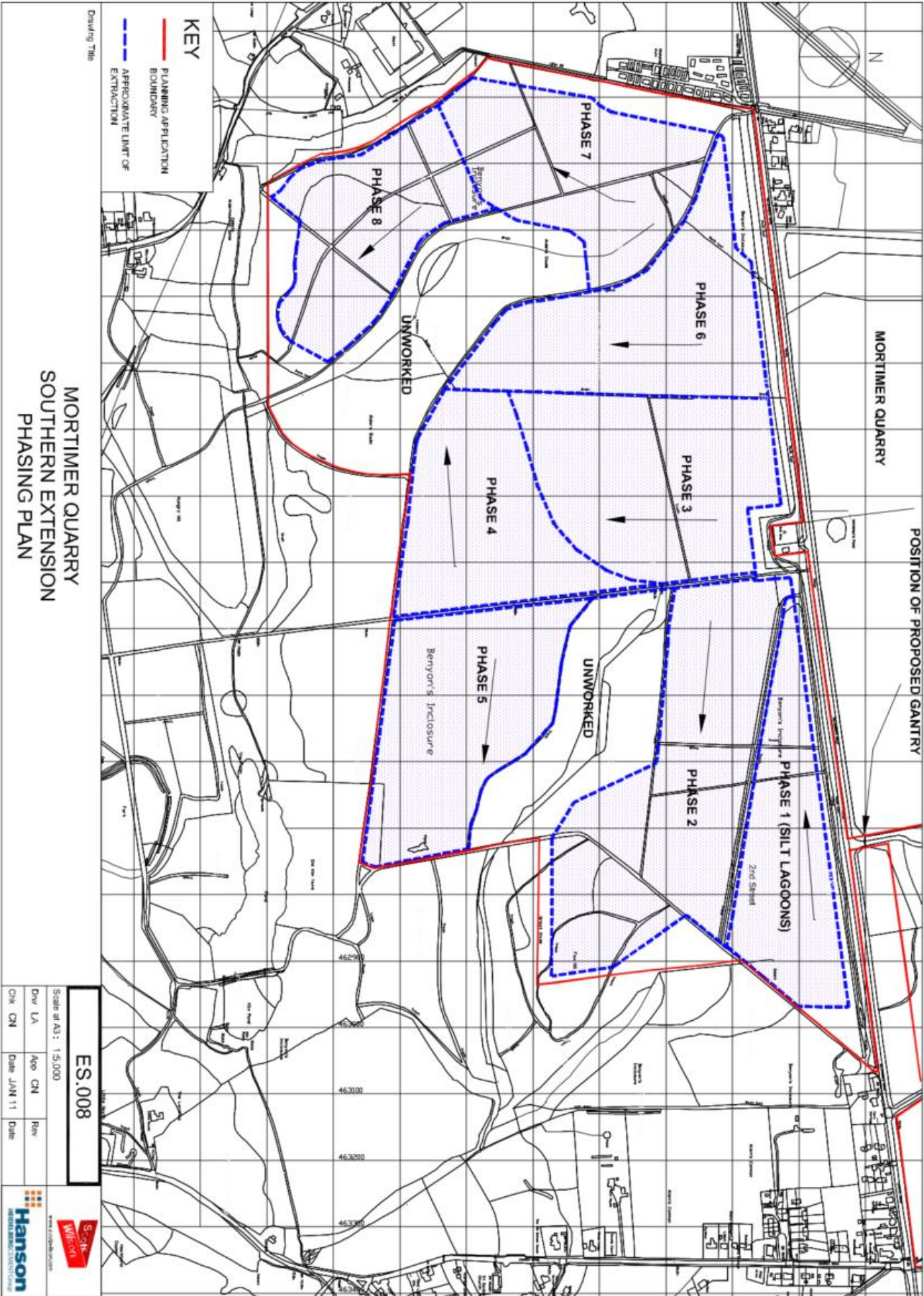
<https://www.hills-group.co.uk/>

<https://www.mineralproducts.org/Industry-Overview/Vital-for-Living.aspx>

7.0 Date of Next Meeting: May 2024 (Tues, Wed or Thurs around 16:00pm) (Specific Date TBC)

Appendix:

Plans/Drawings:





Proposed Footpath Crossing (between phase 2 & 3):

