



### **Current work on site**

Mineral continues to be extracted from Phase 2. Production has increased and is also becoming more consistent. A new field conveyor line is now operational, increasing the feed rate to the plant from the dig area. This has helped to increase production and reduce travel time and fuel burn of machinery transporting material to the screener.

Reptile translocation of Phase 2 continues, and we hope to complete on phase 2 towards the start of October. We have commenced reptile surveys in the Phase 3 area which has informed our approach to moving reptiles and clearing this area. Clearance of trees in Phase 3 has started

Phase 2a has been restored and drainage successfully implemented. A final drainage cut needs to be worked into the southern boundary and restoration in this area will then be complete.

### **Liaison committee**

The last liaison committee meeting took place on site on 27<sup>th</sup> October 2022. The minutes of that meeting can be found [here](#). The next liaison meeting is proposed for 5<sup>th</sup> October 2023.

The meetings provide an opportunity for Hills to provide updates to community representatives on the current workings at the quarry and to answer any queries.

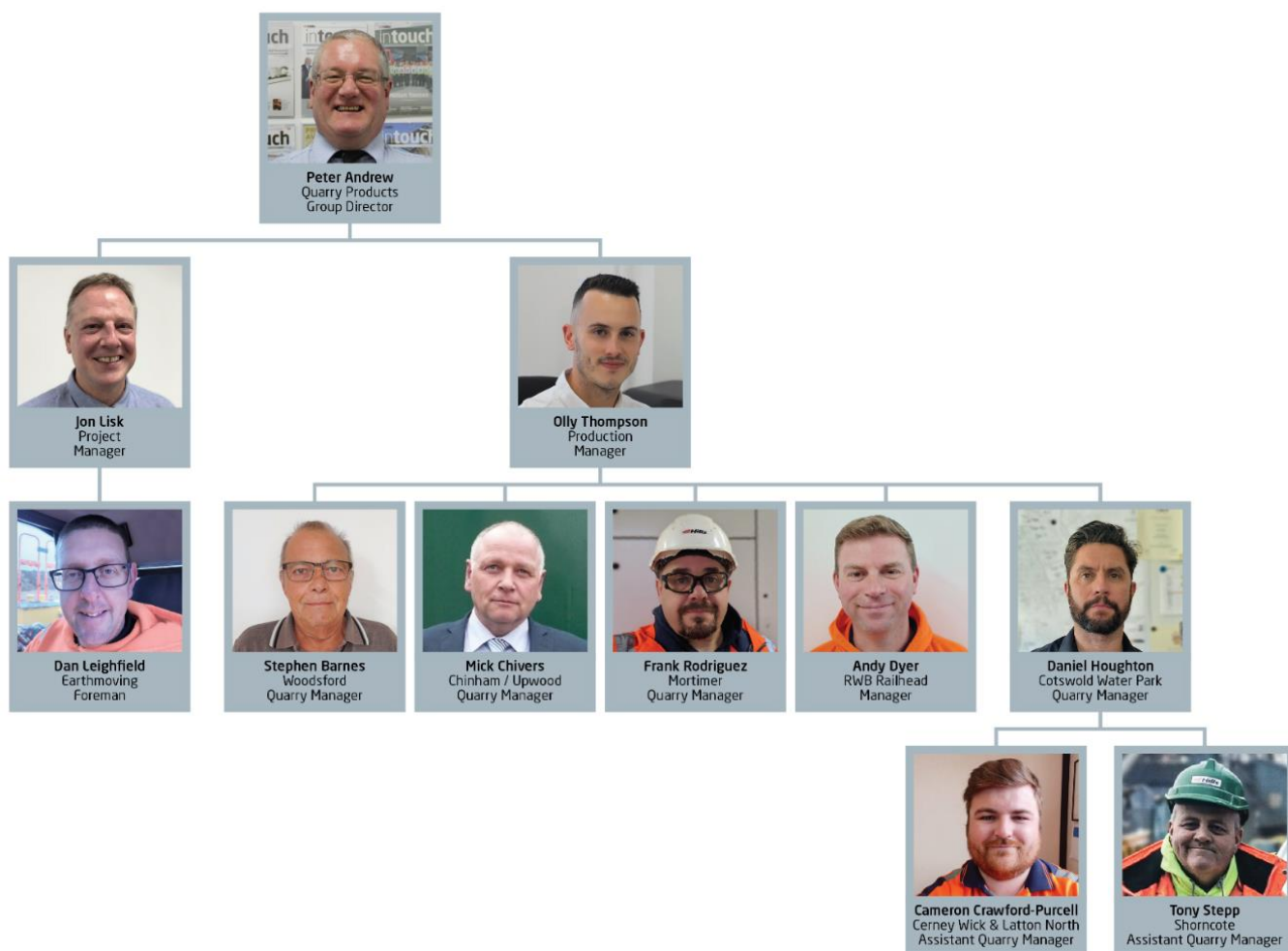


# Mortimer Quarry Summer Newsletter 2023

## Quarry Products management team update



## Aggregates Production Reorganisation - Quarry Products



## Safety update

Hills Quarry Products is currently running a programme to further improve its Health and Safety policies and procedures along with a programme of improved signage at all its sites in conjunction with the Group Communications team.

Investigations are also underway for improved dust control measures to be implemented at Mortimer Quarry.



## Support for local community projects

We are pleased to have been able to support the Padworth Show once more:

### **Padworth Show 2023**

Hills made a donation of £175 towards the costs for running the annual Padworth Show held earlier this year.



---

## For reference

As we progress through each phase of the quarry, we repeat certain activities many times over. This guide explains some of the terminology we use in our workings:

Timber harvesting: Mortimer Quarry is located within part of the large area of commercial forest owned by Englefield Estate. The timber is harvested in phases to allow the sand and gravel to be excavated following which the phases are restored to mixed forest including biodiversity areas with public access.

Soil stripping: This is the removal of topsoil which is placed into amenity bunds on the site. Archaeologists are on site to record any finds as the work is undertaken. See [more here](#) on how Hills has worked with archaeologists on other sites.

Creating bunds: The topsoil in each working phase is not removed from the site but retained within the area and used to create amenity bunds. These bunds are a requirement of the planning permission, and they create a visual barrier into the site along with helping to reduce noise. The bunds will become covered with vegetation such as ferns and heathers which are in keeping with the surroundings. Once the sand and gravel has been extracted, the bunds are used in the restoration of the site. For more details on the overall restoration of Mortimer Quarry and examples of other Hills' restoration projects – [click here](#).

Ecological mitigation: Moving reptiles, (also known as translocation) is always undertaken by qualified ecologists who first erect special fencing to prevent any additional reptiles entering the donor site. This is done before any timber harvesting takes place and remains in place until ecologists are satisfied that the site is 'clear'. Reptile refugia (such as roofing felt and corrugated metal tins) are set up in the donor site and inspected regularly. Any reptiles found in the refugia are moved by the ecologists to the receptor sites – this takes several months. This is followed by habitat manipulation works, under the ecologists' supervision, where vegetation is cleared to ground level using a tractor-mounted flail followed by clearance of the top layer of vegetation using an excavator. The topsoils are then placed into piles (called windrows) and the ecologists inspect and monitor these to capture the final remaining reptiles. [Click here](#) to see the ecology reports for Mortimer Quarry.