



## Current restoration projects

### Tubney Wood Quarry, Oxfordshire

Extraction: 1990 – 2011

Restoration: 2012 – to date

Following extraction of 1.5 million tonnes of sand, Tubney Wood Quarry has been progressively restored to meadow pastures and small broadleaf woodland areas with areas left open for glades and wide grass tracks (rides). Working with The Forestry Commission, Hills has planted 15,000 trees and, following a request from the local community, also landscaped a small hill near the A420 roundabout to help reduce road noise.





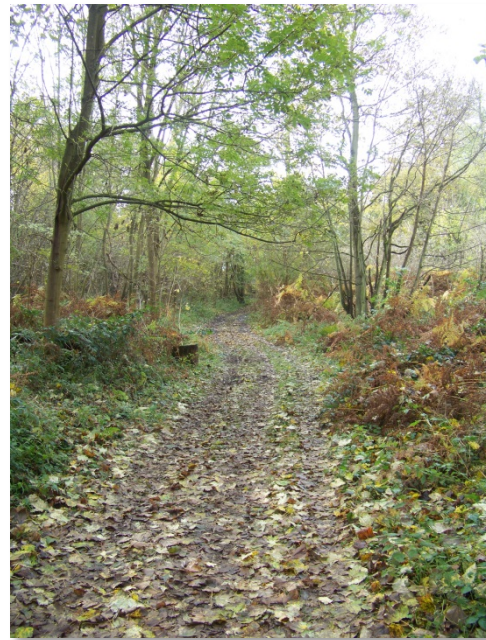
## **Upwood Quarry, Oxfordshire**

Extraction: 2012 – to date

Restoration: Progressive ongoing

Upwood Quarry began its operational life in January 2012 and is expected to last for around 17 years plus restoration. The anticipated yield is 1.5 - 2 million tonnes of product for mortar sand, building sand and asphalt sand plus a variety of limestone based aggregate products.

An existing footpath which crosses through the middle of the site has been protected and maintained for ramblers to use safely during quarry working. Restoration to date has been back to agricultural fields.



## **Bowling Green Farm & Chinham Farm Quarry**

Extraction: 2012 – to date

Restoration: Progressive ongoing

Bowling Green Quarry began its operational life in 1993 and expanded into Chinham in 2005. The estimated yield to date is 720,000 tonnes of dry screened building sand. Once extraction has been completed the site will be restored to two natural habitat lakes, with a wooded area and a low-lying saddle which will connect the two lakes when there are high levels of surface water.

In 2017 Hills was granted permission to extend the site for an additional 20 years. The extension will allow the extraction of a further 1.5 million tonnes of soft sand and an additional 0.6 million tonnes of limestone. The mineral will be extracted at a rate of approximately 95,000 tonnes per year and will be restored back to agricultural fields with additional woodland areas, native hedgerow planting and meadow grassland.





## **Woodsford Quarry, Dorset**

Extraction: 2009 – to date

Restoration: Progressive ongoing

Woodsford Quarry began its operational life in September 2009 and has an anticipated yield of 4.2 million tonnes of sand and gravel which is expected to last 24 years plus restoration.

The mineral is extracted at a rate of approximately 175,000 tonnes per year and the site is being progressively restored back to Grade A agricultural fields with a small area of wetland.





## **Shorncote Quarry and Dryleaze, Gloucestershire**

Extraction: 1987 – to date

Restoration: Progressive ongoing

Shorncote Quarry began its operational life in 1987 and has an anticipated yield of 10 million tonnes of sand and gravel which is expected to last a total of 32 years plus restoration.

The mineral is extracted at a rate of approximately 250,000 tonnes per year and the site is being progressively restored back to agricultural fields and wetland habitat.

Planning permission is currently being sought to extend the permission to include nearby reserves.

